

List of pages in this Trip Kit

Trip Kit Index

Airport Information For UERP

Terminal Charts For UERP

Revision Letter For Cycle 09-2019

Change Notices

Notebook

General Information

Location: POLIARNY RUS
ICAO/IATA: UERP / PYJ
Lat/Long: N66° 24.0', E112° 01.8'
Elevation: 1670 ft

Airport Use: Public
Daylight Savings: Not Observed
UTC Conversion: -9:00 = UTC
Magnetic Variation: 9.0° W

Fuel Types: Jet A-1
Customs: No
Airport Type: IFR
Landing Fee: Yes
Control Tower: Yes
Jet Start Unit: No
LLWS Alert: No
Beacon: No

Sunrise: 1911 Z
Sunset: 1346 Z

Runway Information

Runway: 17
Length x Width: 10171 ft x 138 ft
Surface Type: concrete
TDZ-Elev: 1657 ft
Lighting: Edge, ALS

Runway: 35
Length x Width: 10171 ft x 138 ft
Surface Type: concrete
TDZ-Elev: 1640 ft
Lighting: Edge, ALS

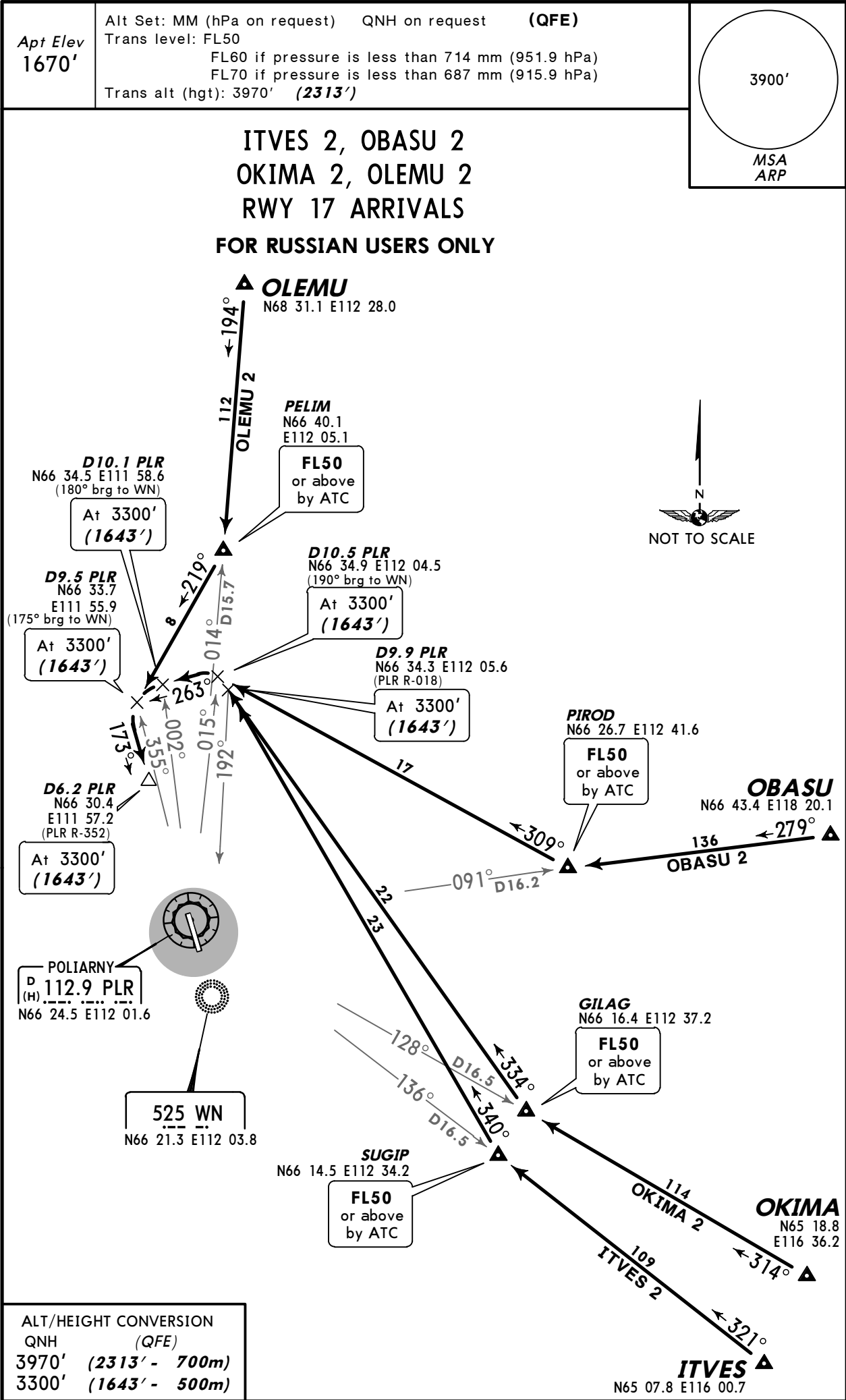
Communication Information

Poliarny Vyshka Tower: 124.200 Non-English
Poliarny Vyshka Tower: 124.000 Secondary Non-English
Poliarny Transit Operations: 131.700 Non-English
AWIS: 127.200 Non-English

UERP/PYJ
POLIARNY

JEPPESSEN
5 DEC 14 10-2 Eff 11 Dec

POLIARNY, RUSSIA
STAR



UERP/PYJ
POLIARNY

JEPPESSEN
5 DEC 14 10-2A Eff 11 Dec

POLIARNY, RUSSIA
STAR

Apt Elev
1670'

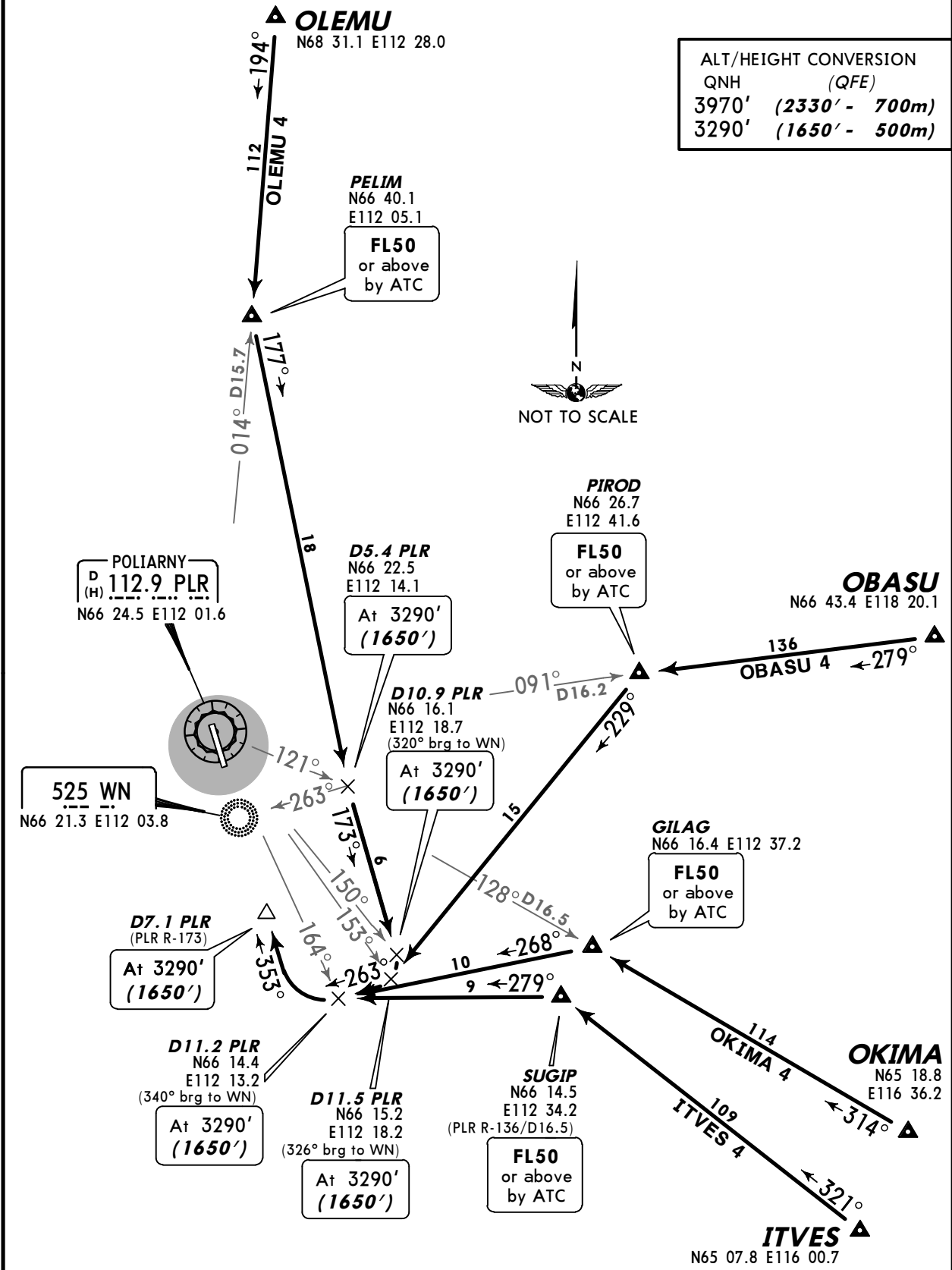
Alt Set: MM (hPa on request) QNH on request (QFE)
Trans level: FL50
FL60 if pressure is less than 714 mm (951.9 hPa)
FL70 if pressure is less than 687 mm (915.9 hPa)
Trans alt (hgt): 3970' (2330')


3900'

MSA
ARP

ITVES 4, OBASU 4
OKIMA 4, OLEMU 4
RWY 35 ARRIVALS
FOR RUSSIAN USERS ONLY

ALT/HEIGHT CONVERSION	
QNH	(QFE)
3970'	(2330' - 700m)
3290'	(1650' - 500m)





3900'

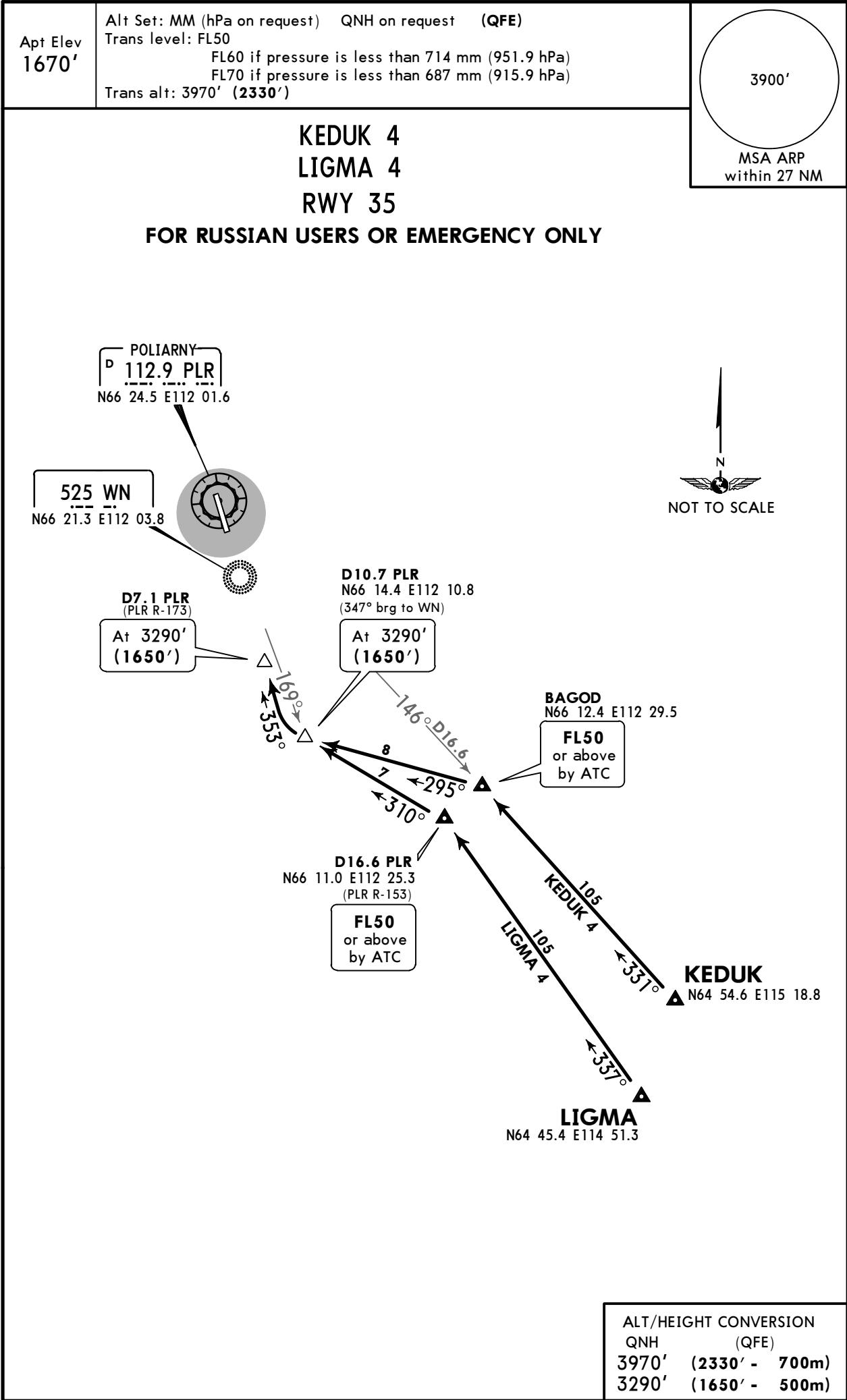
FOR RUSSIAN USERS OR EMERGENCY ONLY



UERP/PYJ
POLIARNY

JEPPESSEN
29 JAN 16 10-2C Eff 4 Feb

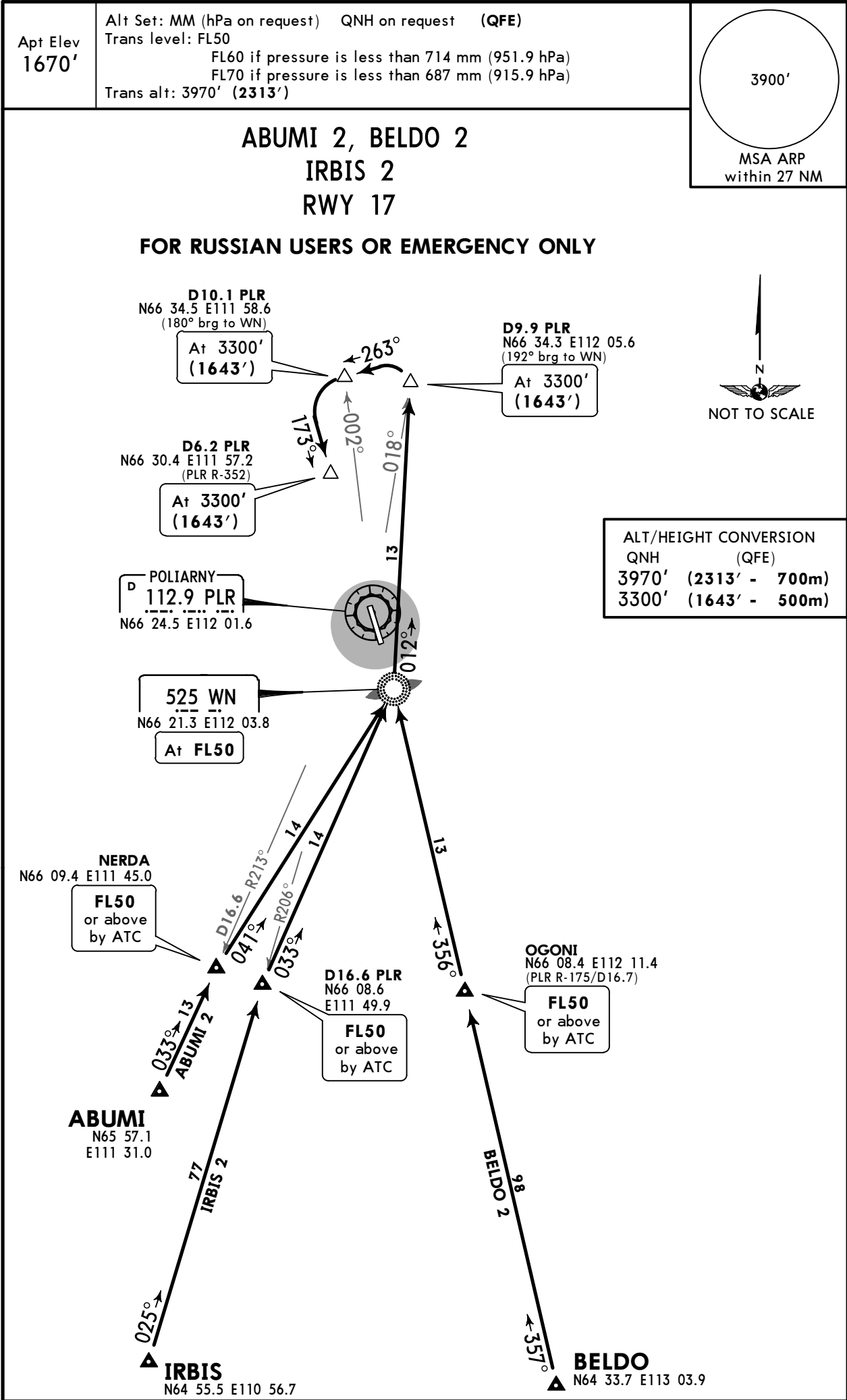
POLIARNY, RUSSIA
STAR



UERP/PYJ
POLIARNY

JEPPesen
29 JAN 16 10-2D Eff 4 Feb

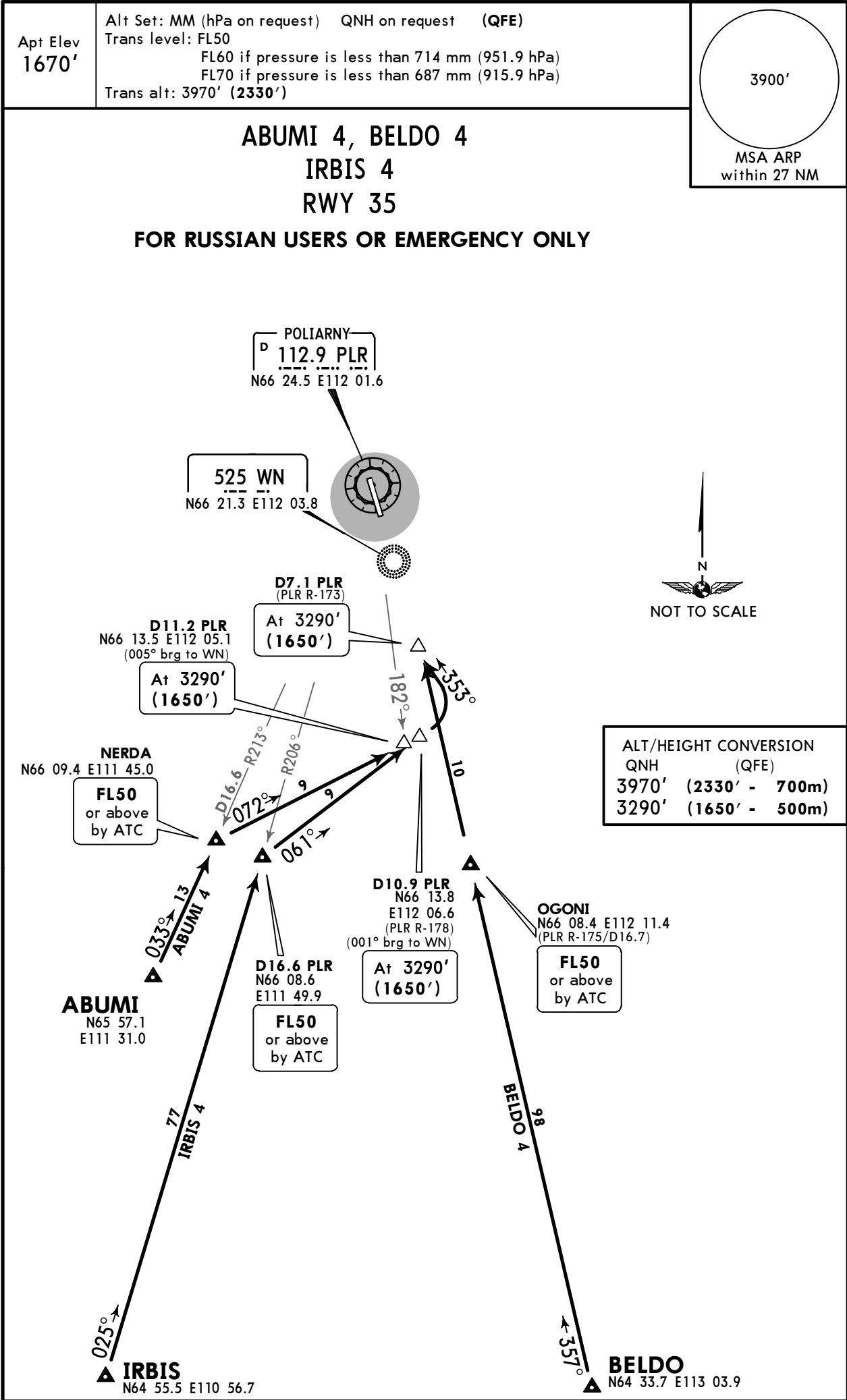
POLIARNY, RUSSIA
STAR



UERP/PYJ
POLIARNY

JEPPESSEN
29 JAN 16 10-2E Eff 4 Feb

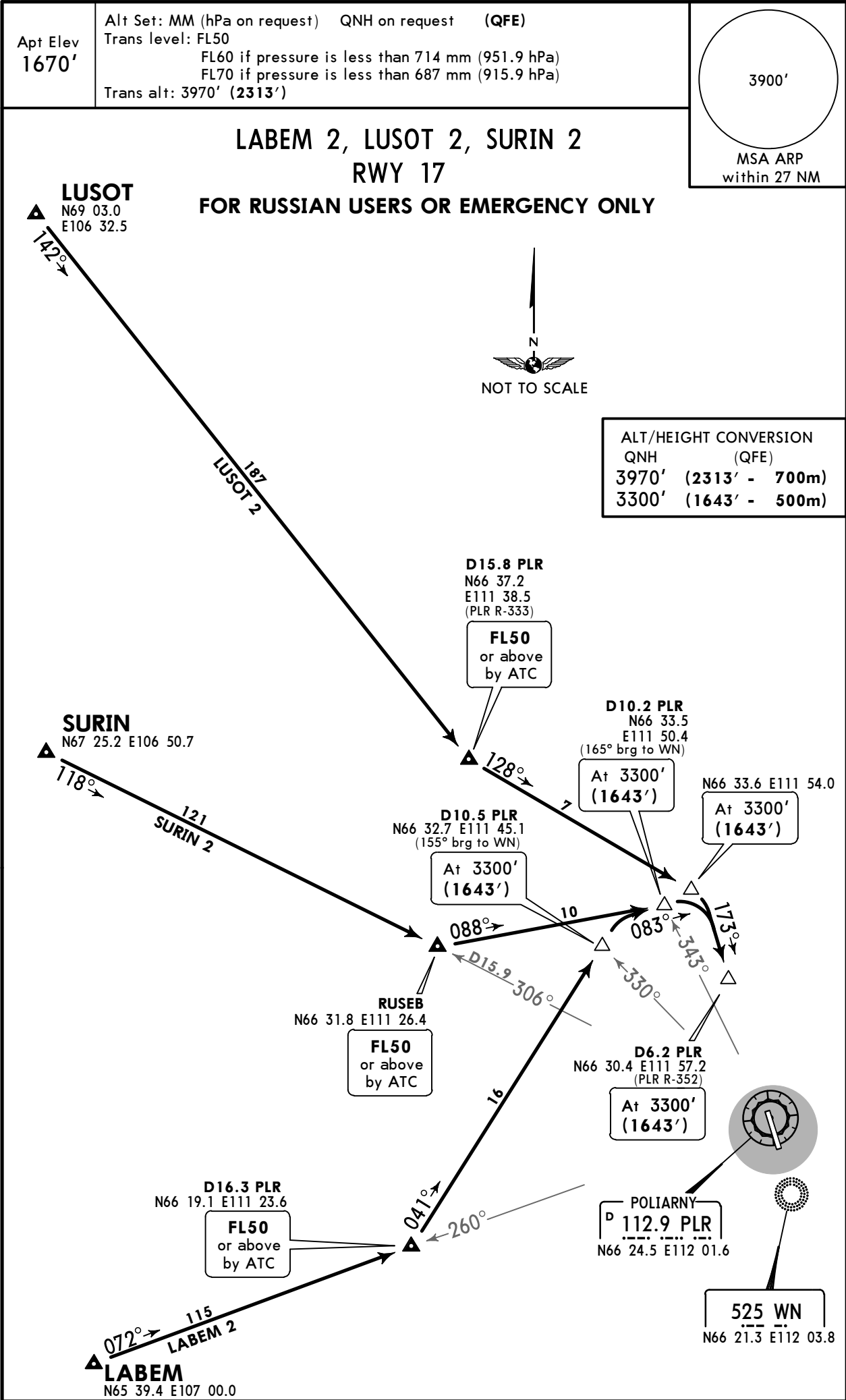
POLIARNY, RUSSIA
STAR



UERP/PYJ
POLIARNY

JEPPESSEN
29 JAN 16 10-2F Eff 4 Feb

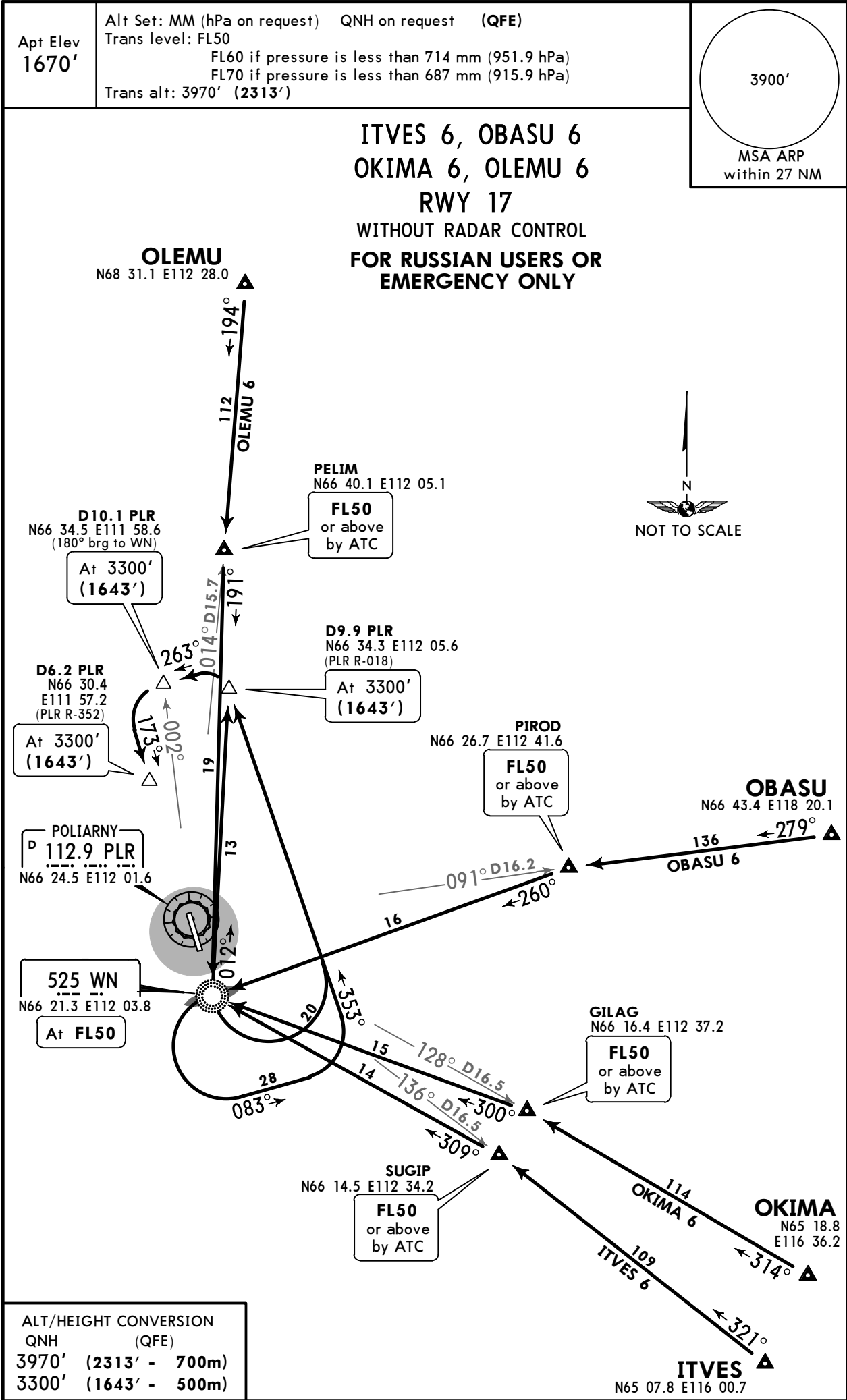
POLIARNY, RUSSIA
STAR



UERP/PYJ
POLIARNY

JEPPESSEN
29 JAN 16 10-2H Eff 4 Feb

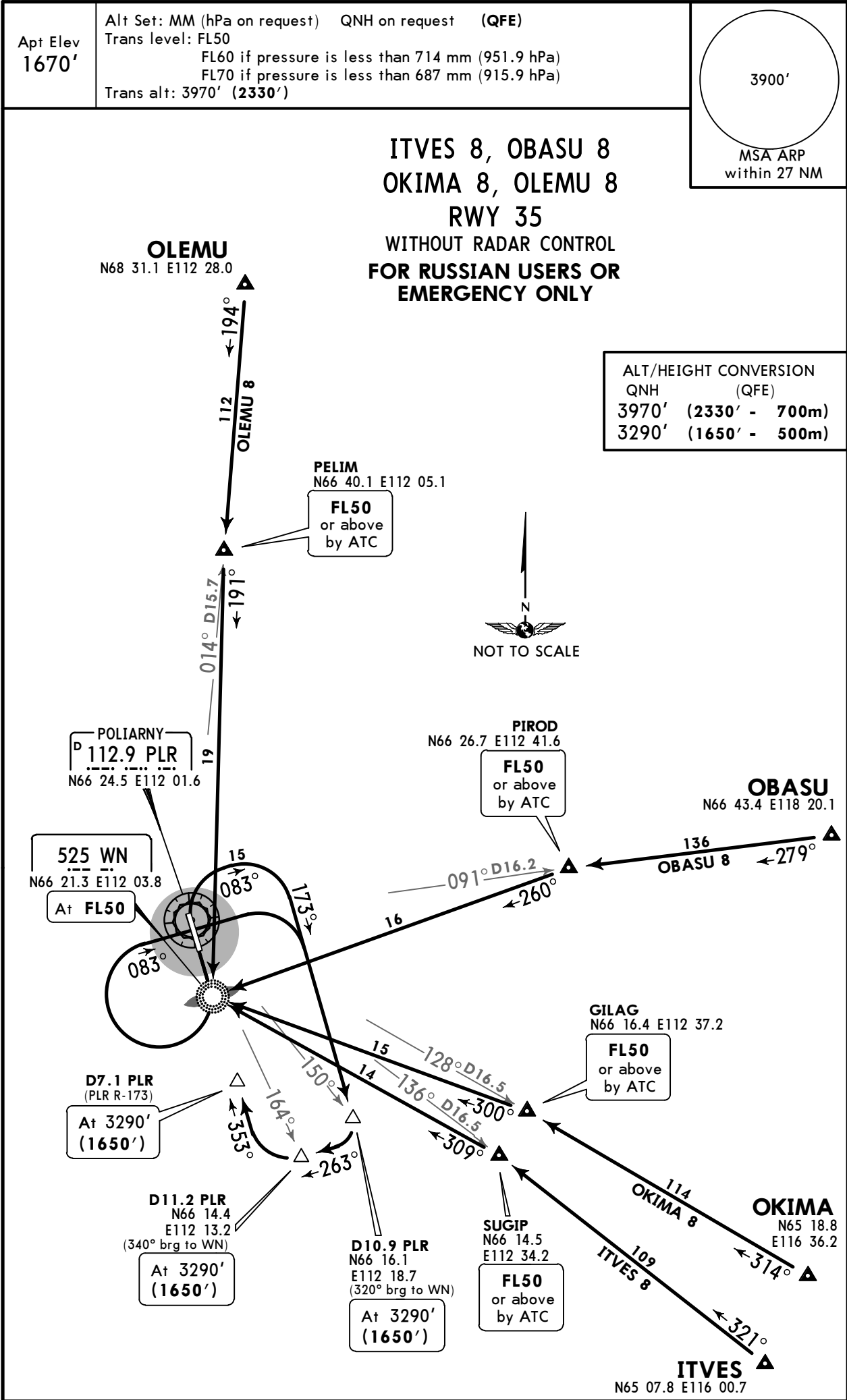
POLIARNY, RUSSIA
STAR



UERP/PYJ
POLIARNY

JEPPesen
29 JAN 16 10-2J Eff 4 Feb

POLIARNY, RUSSIA
STAR



UERP/PYJ
POLIARNY

JEPPESEN
29 JAN 16 10-2K Eff 4 Feb

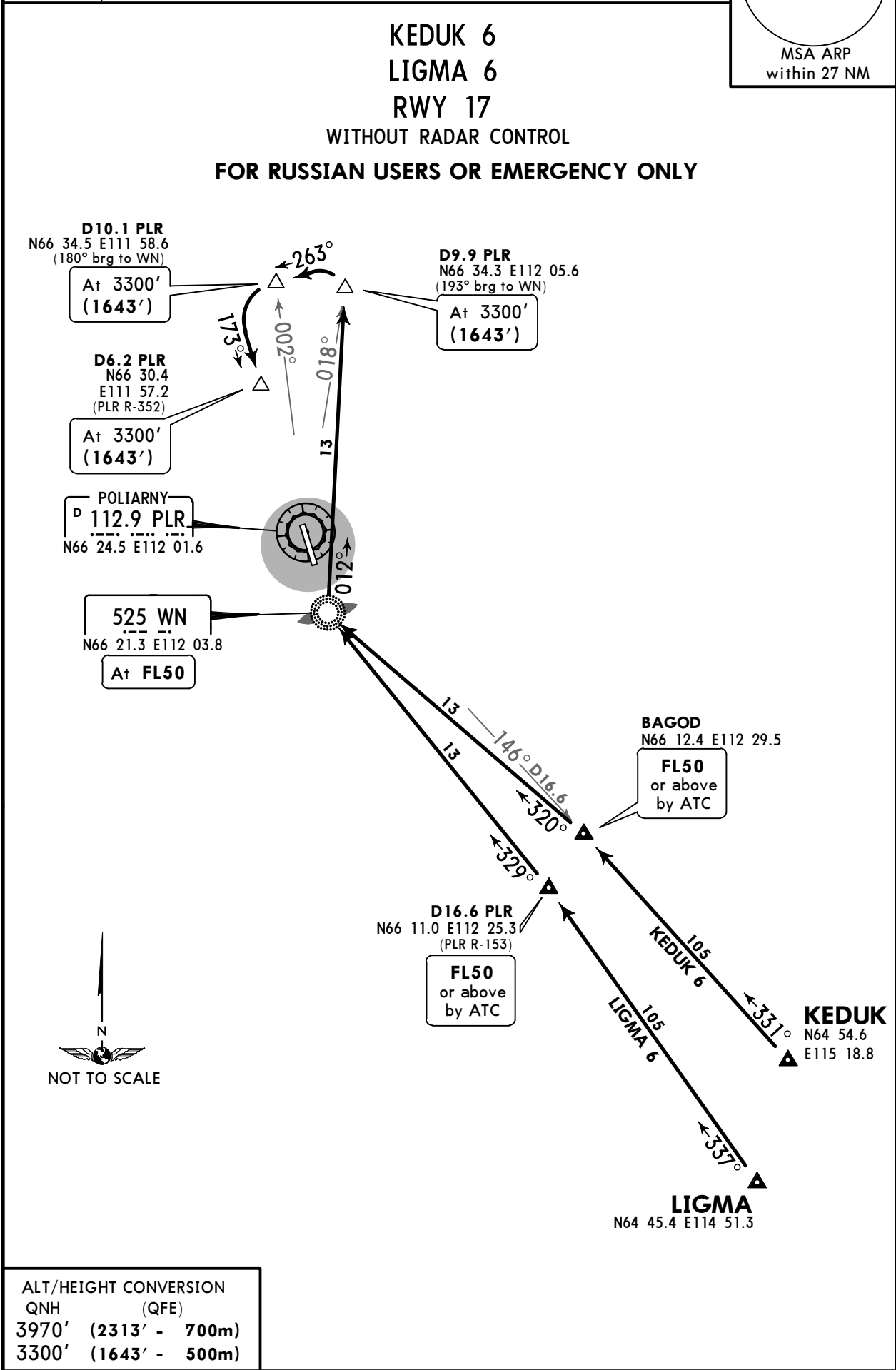
POLIARNY, RUSSIA
STAR

Apt Elev
1670'

Alt Set: MM (hPa on request) QNH on request (QFE)
Trans level: FL50
FL60 if pressure is less than 714 mm (951.9 hPa)
FL70 if pressure is less than 687 mm (915.9 hPa)
Trans alt: 3970' (2313')

3900'

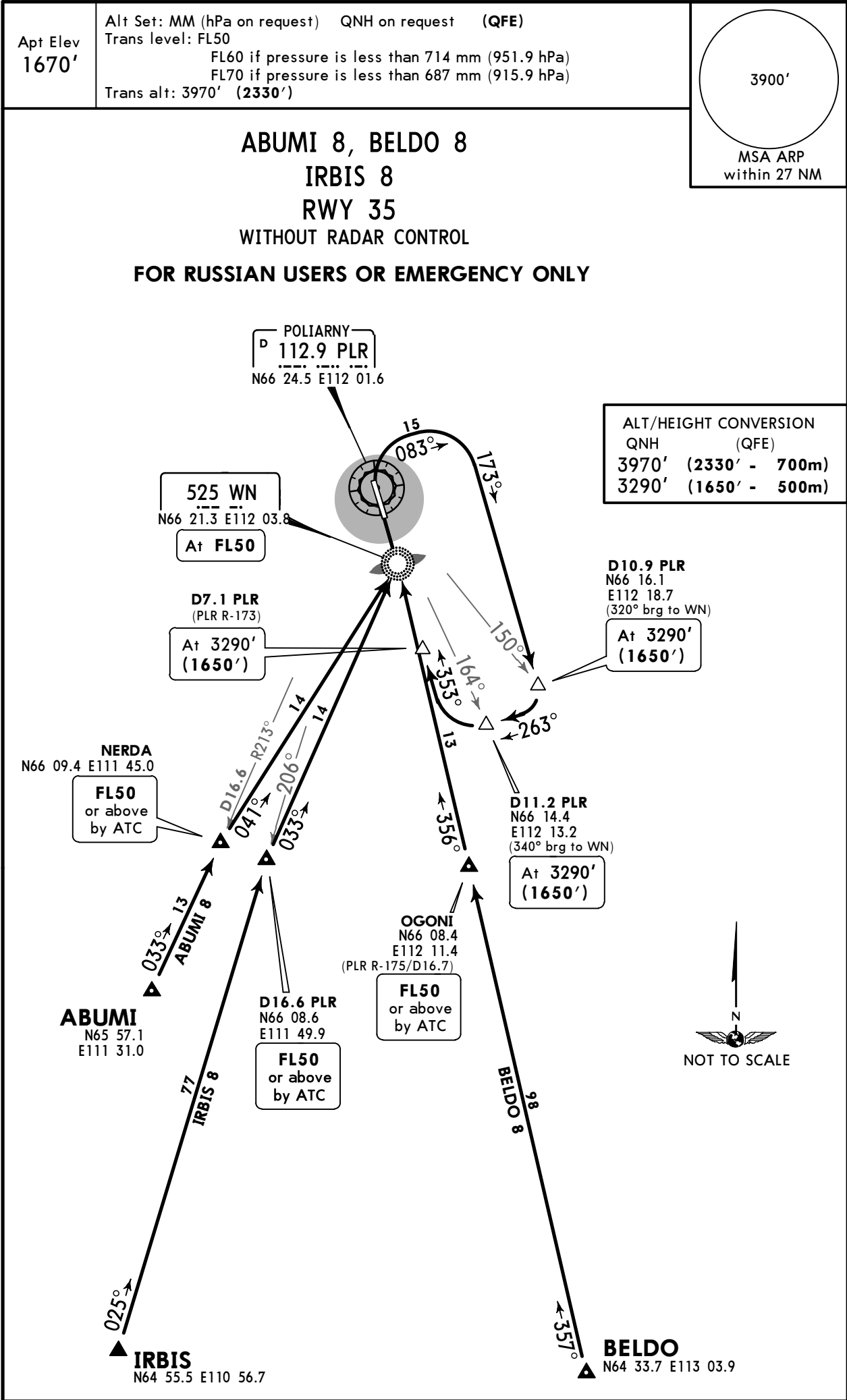
MSA ARP
within 27 NM



UERP/PYJ
POLIARNY

JEPPESSEN
29 JAN 16 10-2N Eff 4 Feb

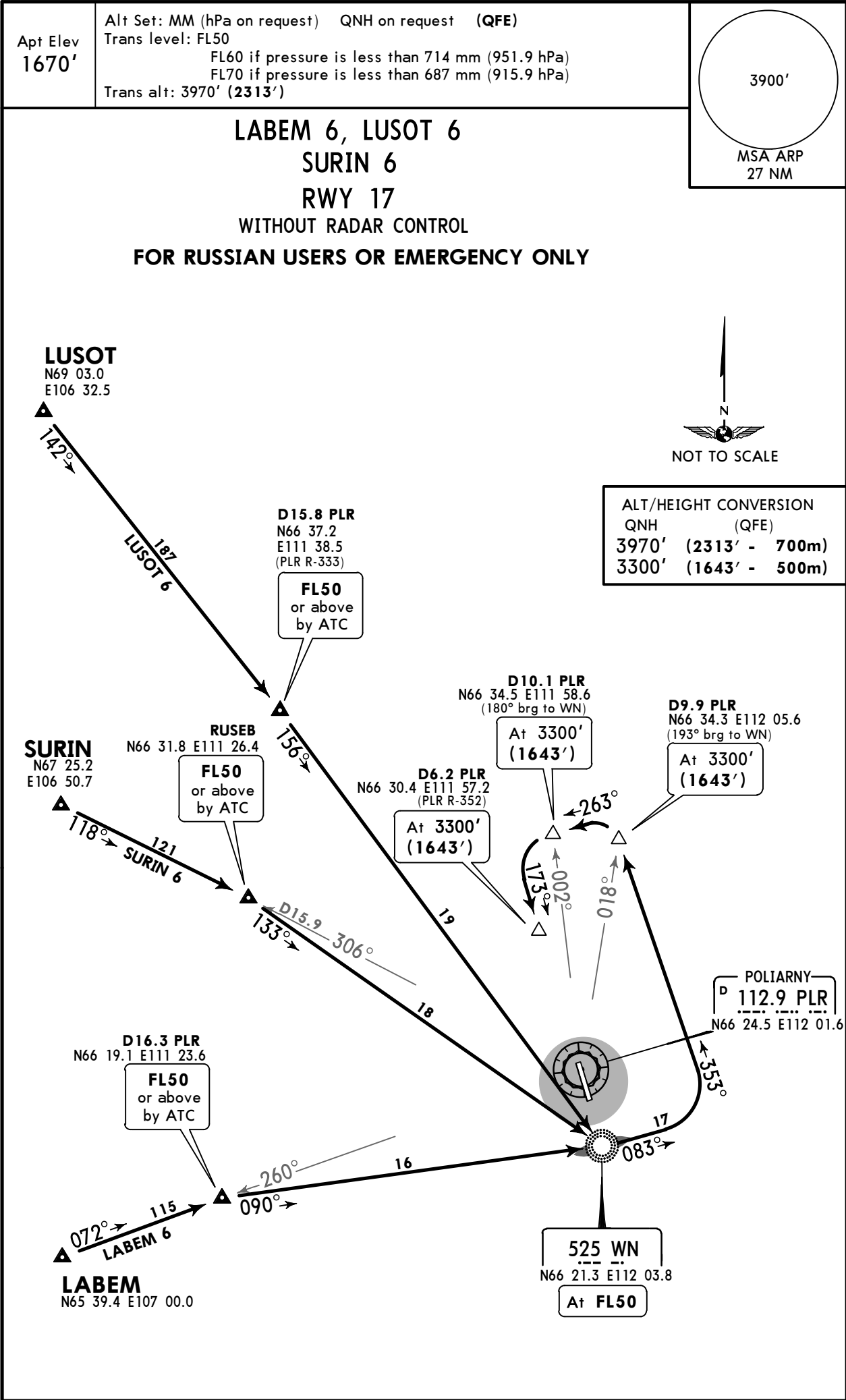
POLIARNY, RUSSIA
STAR



UERP/PYJ
POLIARNY

JEPPESSEN
29 JAN 16 10-2P Eff 4 Feb

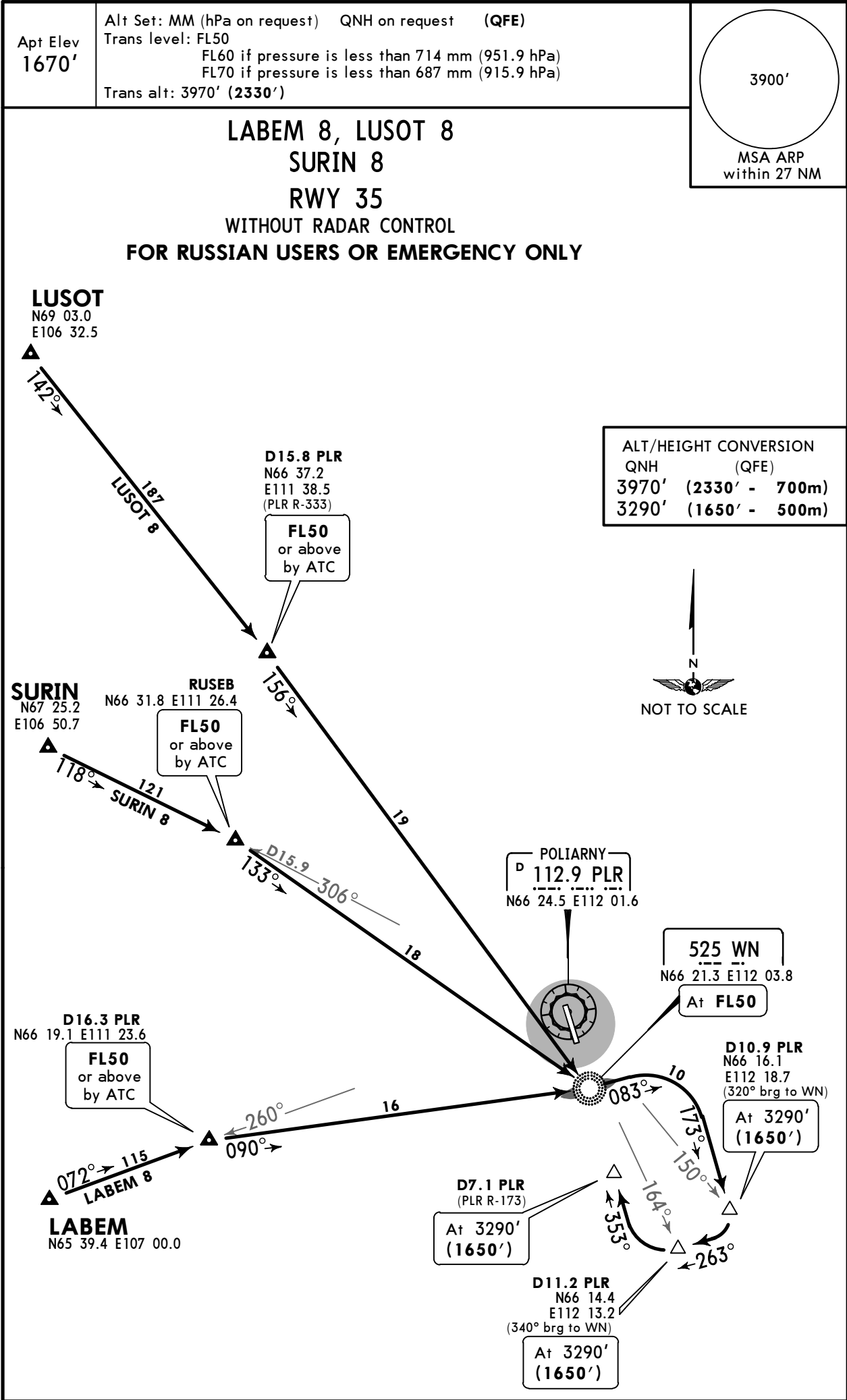
POLIARNY, RUSSIA
STAR



UERP/PYJ
POLIARNY

JEPPESSEN
29 JAN 16 10-2Q Eff 4 Feb

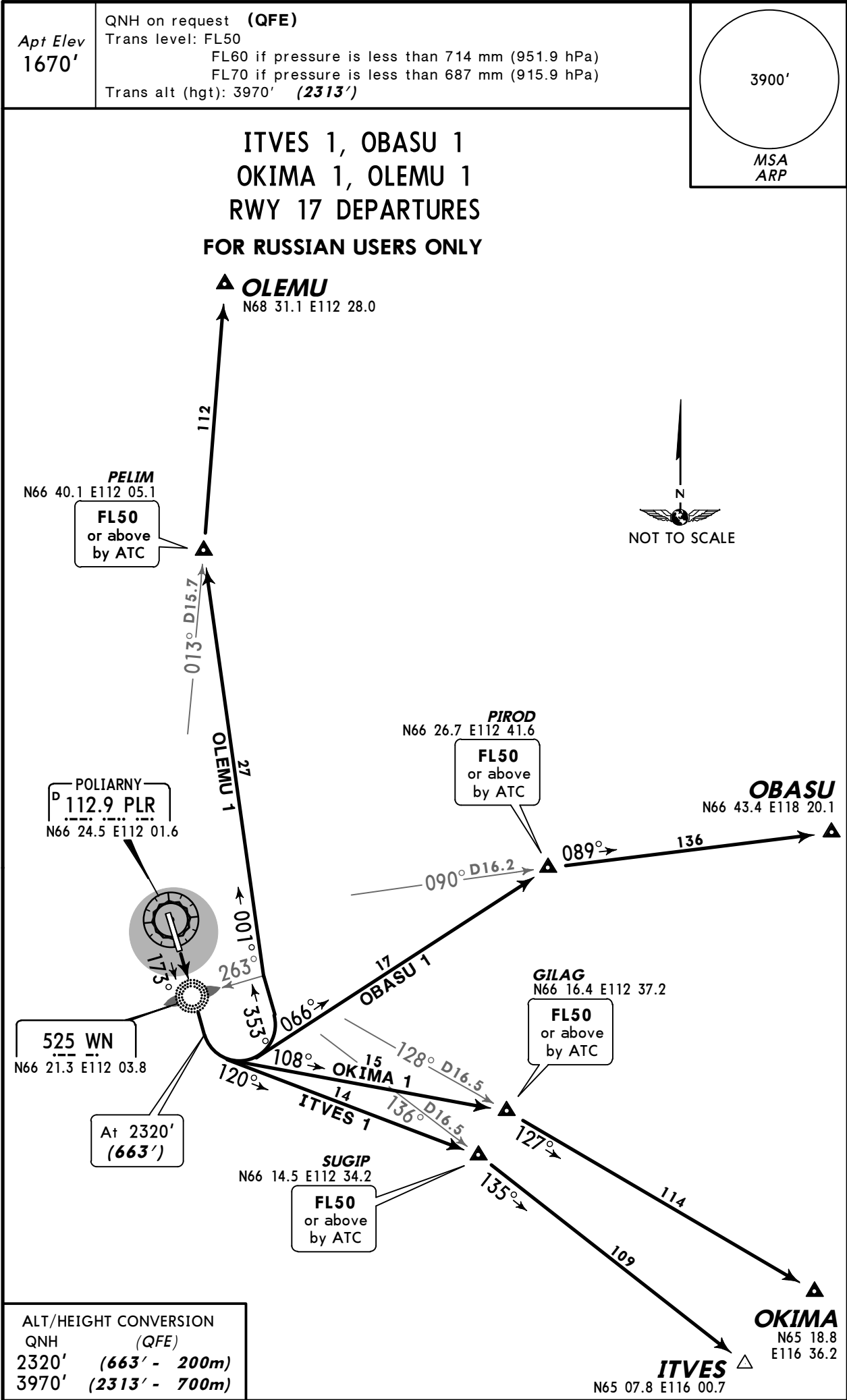
POLIARNY, RUSSIA
STAR




UERP/PYJ
POLIARNY

JEPPESSEN
20 JAN 12 10-3

POLIARNY, RUSSIA
SID



© JEPPESEN, 2012. ALL RIGHTS RESERVED.



3900'

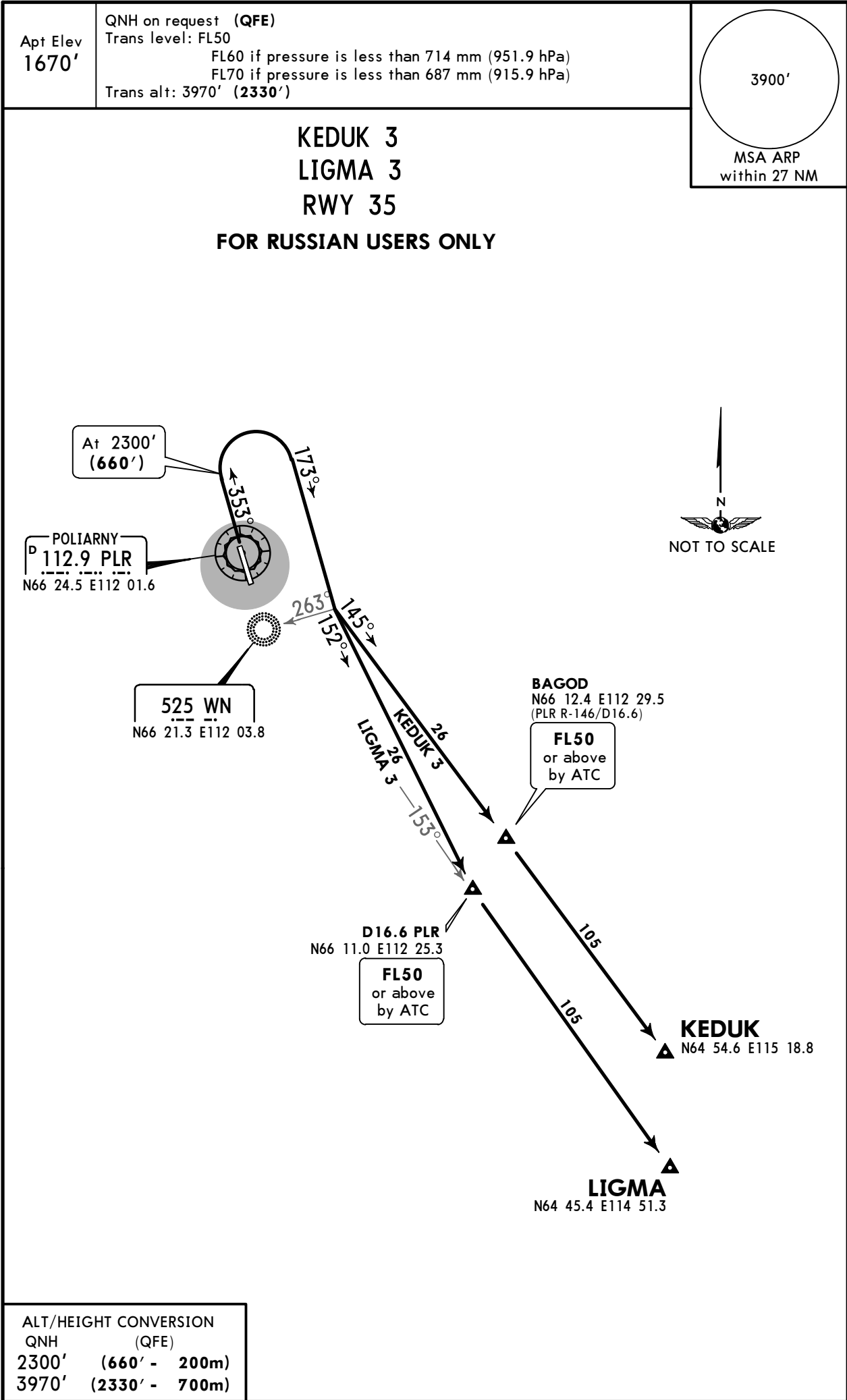
MSA ARP
within 27 NM

© JEPPESEN, 2016. ALL RIGHTS RESERVED.

UERP/PYJ
POLIARNY

JEPPESSEN
29 JAN 16 10-3C Eff 4 Feb

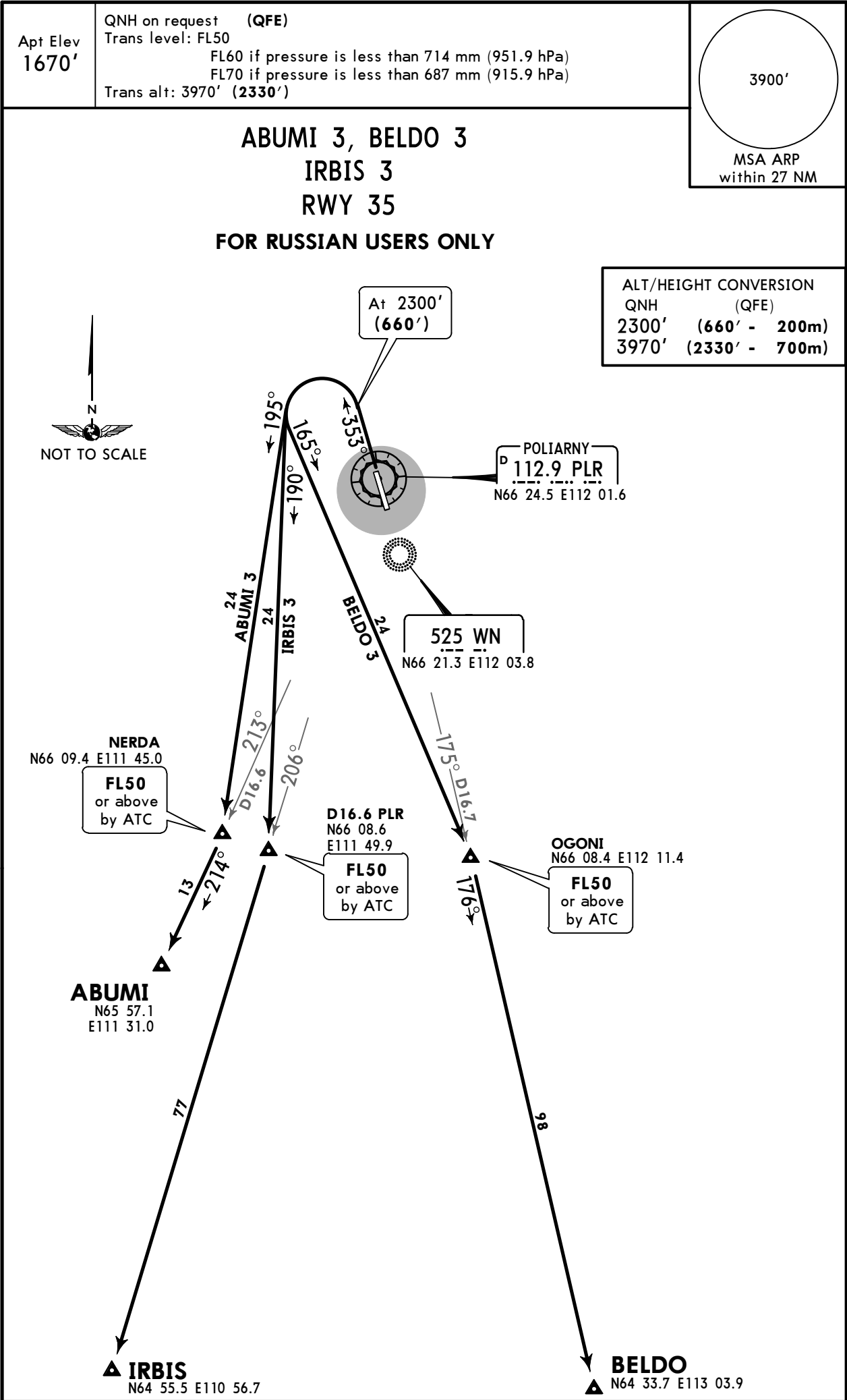
POLIARNY, RUSSIA
SID



UERP/PYJ
POLIARNY

JEPPESSEN
29 JAN 16 10-3E Eff 4 Feb

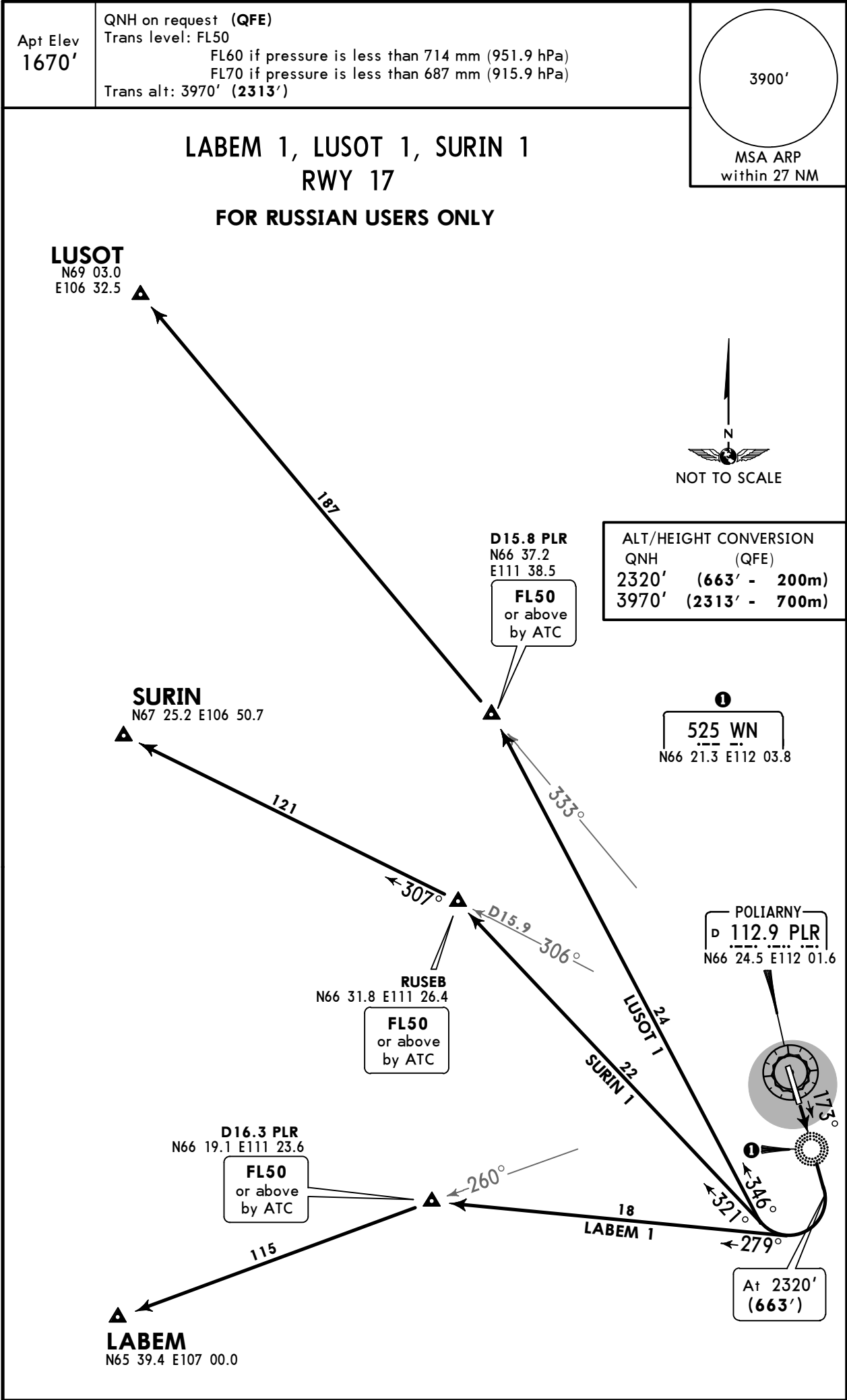
POLIARNY, RUSSIA
SID



UERP/PYJ
POLIARNY

JEPPesen
29 JAN 16 10-3F Eff 4 Feb

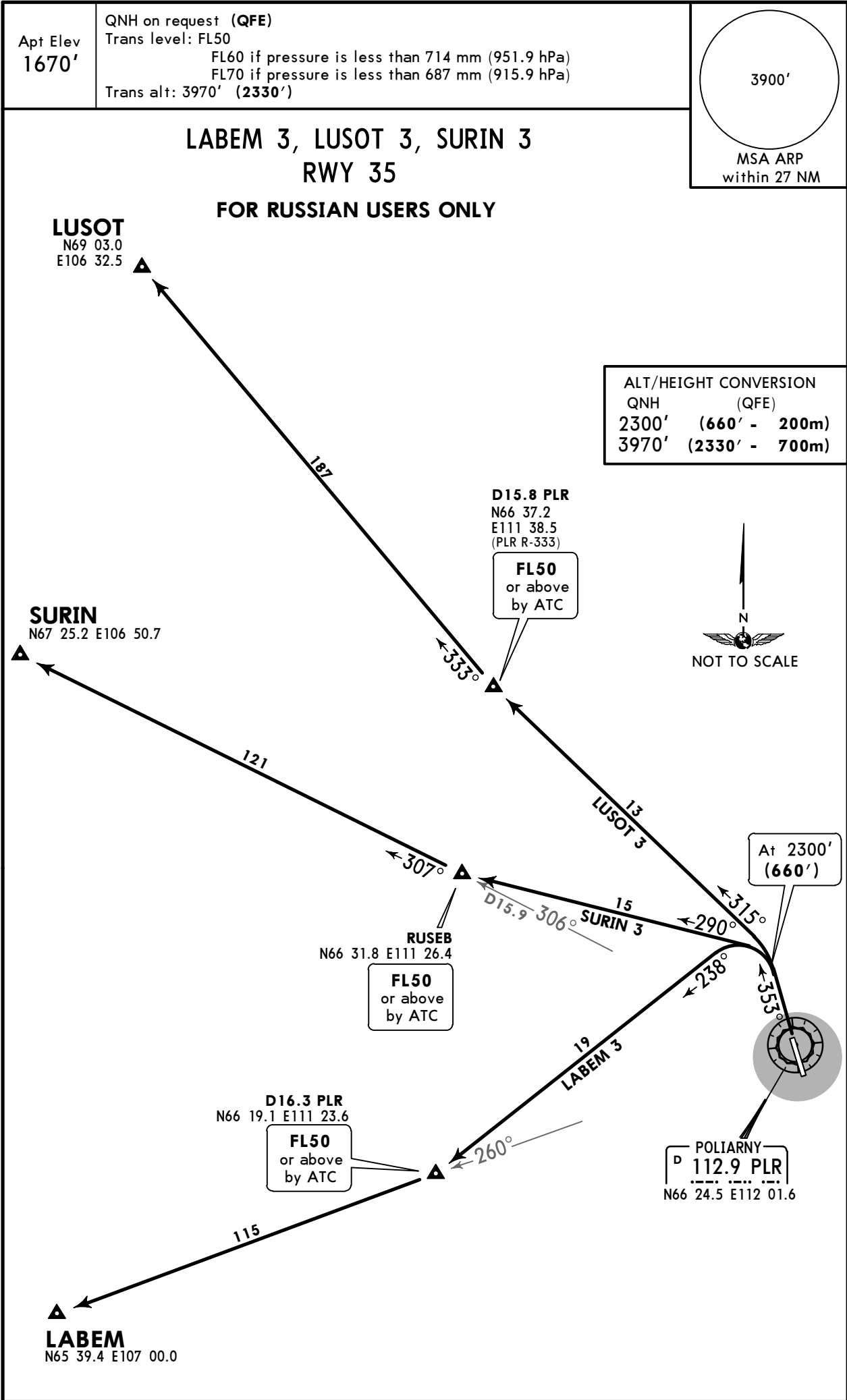
POLIARNY, RUSSIA
SID



UERP/PYJ
POLIARNY

JEPPESSEN
29 JAN 16 10-3G Eff 4 Feb

POLIARNY, RUSSIA
SID

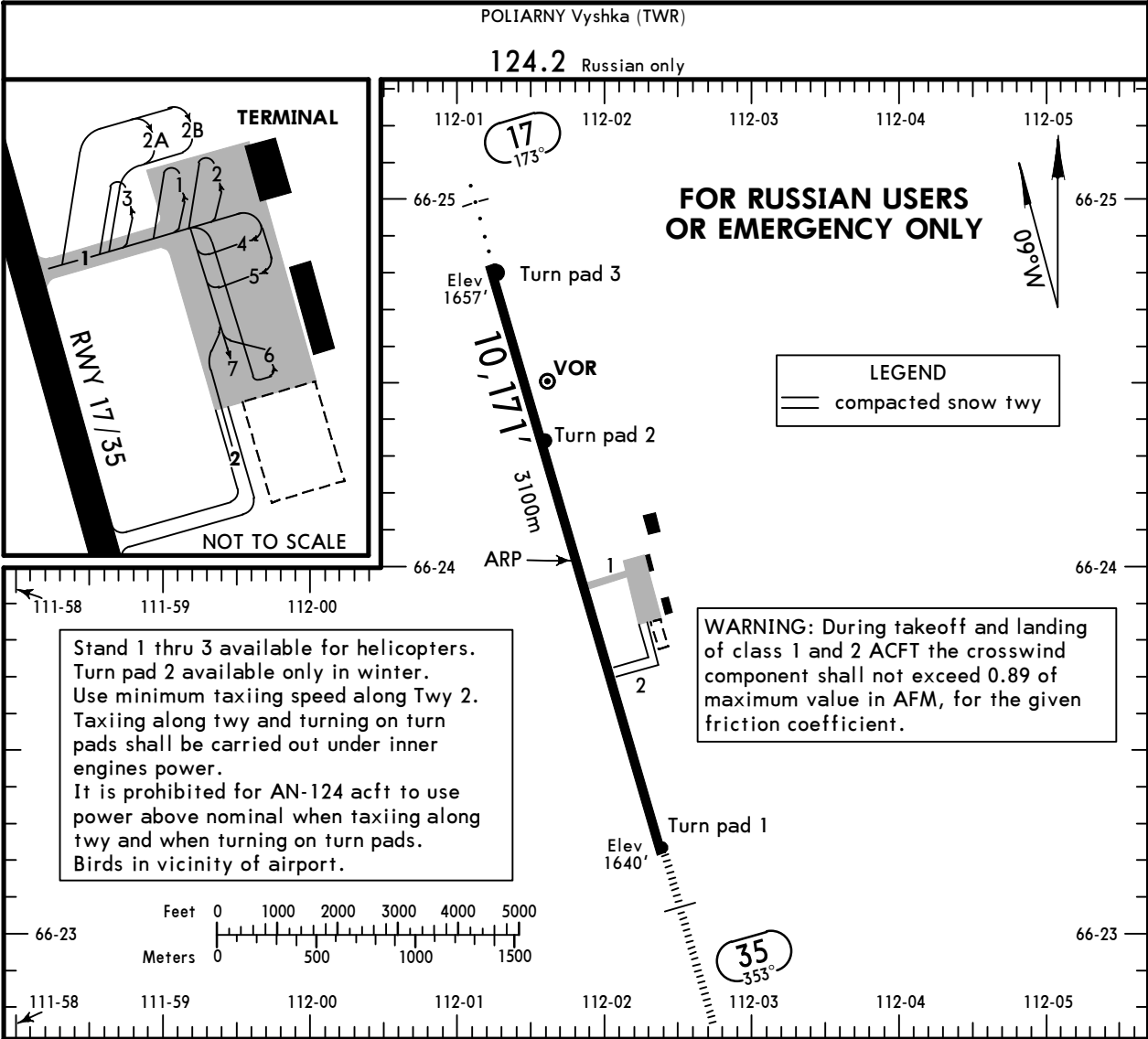


UERP/PYJ

Apt Elev 1670'
N66 24.0 E112 01.8

JEPPesen
18 MAY 18 10-9 Eff 24 May

POLIARNY, RUSSIA
POLIARNY



ADDITIONAL RUNWAY INFORMATION							
RWY				USABLE LENGTHS		TAKE-OFF	WIDTH
				Threshold	Glide Slope		
17	HIRL (59m)	ALS	PAPI-L (2.67°)			2	138' 42m
35 1	HIRL (59m)	HIALS	PAPI-L (2.67°)		9138' 2785m		

- 1 The part of RWY going from THR 35 in direction to ARP has a longitudinal slope, which could make it difficult to determine the height of leveling-off point and could increase landing distance.
When ACFT is on the part of RWY between THR 35 and TWY 1, RWY end and LOC antenna are not visible, due to the longitudinal slope. On the rest part of the RWY after TWY1, when taking off on track 353°, LOC antenna begins to be visible above the RWY, which could seem to be an obstacle on the RWY, especially at condition when visibility is less than 2000m.
- 2 First 328'/100m unusable for take-off.
TAKE-OFF RUN AVAILABLE
RWY 17:
From posn, 328'/100m
after rwy head 9843'(3000m)
turn pad 2 7218'(2200m)
twy 1 int 4429'(1350m)
- RWY 35:**
From posn, 328'/100m
after rwy head 9843'(3000m)
twy 1 int 5741'(1750m)

TAKE-OFF	
AIR CARRIER (JAA)	
All Rwys	
	LVP must be in force RCLM (DAY only) or RL
A	
B	250m
C	
D	300m

UERP/PYJ
 **JEPPesen**

29 JAN 16

10-9S
Eff 4 Feb
Standard
POLIARNY, RUSSIA
POLIARNY

STRAIGHT-IN RWY		A	B	C	D
17	NDB ❶ ❷	1990' (333')	1990' (333')	1990' (333')	1990' (333')
		R1300m	R1300m	R1300m	R1300m
	ALS out	R1500m	R1500m	R1500m	R1500m
	NDB ❸	2240' (583')	2240' (583')	2240' (583')	2240' (583')
		C2700m	C2700m	C2900m	C2900m
	ALS out	C2900m	C2900m	C3100m	C3100m
35	ILS	1840' (200')	1840' (200')	1840' (200')	1840' (200')
	FULL	R550m	R550m	R550m	R550m
	Limited	R750m	R750m	R750m	R750m
	ALS out	R1200m	R1200m	R1200m	R1200m
	LOC	NOT AUTH	NOT AUTH	NOT AUTH	NOT AUTH
	2 NDB ❶ ❷	1960' (320')	1960' (320')	1960' (320')	1960' (320')
		R750m	R750m	R750m	R750m
	ALS out	R1400m	R1400m	R1400m	R1400m
	2 NDB ❸	2750' (1110')	2750' (1110')	2750' (1110')	2750' (1110')
		C4800m	C4800m	C5000m	C5000m
	ALS out	R5000m	R5000m	C5000m	C5000m
	WN NDB ❶ ❷	1940' (300')	1940' (300')	1940' (300')	1940' (300')
		R750m	R750m	R750m	R750m
	ALS out	R1400m	R1400m	R1400m	R1400m
	WN NDB ❸	2750' (1110')	2750' (1110')	2750' (1110')	2750' (1110')
		C4800m	C4800m	C5000m	C5000m
	ALS out	C5000m	C5000m	C5000m	C5000m
	W NDB ❶ ❷	1960' (320')	1960' (320')	1960' (320')	1960' (320')
		R750m	R750m	R750m	R750m
	ALS out	R1400m	R1400m	R1400m	R1400m
	W NDB ❸	2750' (1110')	2750' (1110')	2750' (1110')	2750' (1110')
		C4800m	C4800m	C5000m	C5000m
	ALS out	C5000m	C5000m	C5000m	C5000m

❶ Continuous Descent Final Approach.

❷ with FAF.

❸ w/o FAF.

CIRCLE-TO-LAND	100 KT	135 KT	180 KT	205 KT
to rwy 17 ❹	2060' (403')	2160' (503')	2260' (603')	2360' (703')
to rwy 35 ❺	2050' (410')	2140' (500')	2240' (600')	2340' (700')
	V1500m ❻	V1600m ❻	V2400m ❻	V3600m ❻

❹ Circling height based on rwy 17 thresh elev of 1657'.

❺ Circling height based on rwy 35 thresh elev of 1640'.

❻ or higher minimums of preceding straight-in approach.

TAKE-OFF RWY 17, 35

LVP must be in Force			
RCLM (DAY only) or RL		RCLM (DAY only) or RL	NIL (DAY only)
A	250m	400m	500m
B			
C			
D	300m		

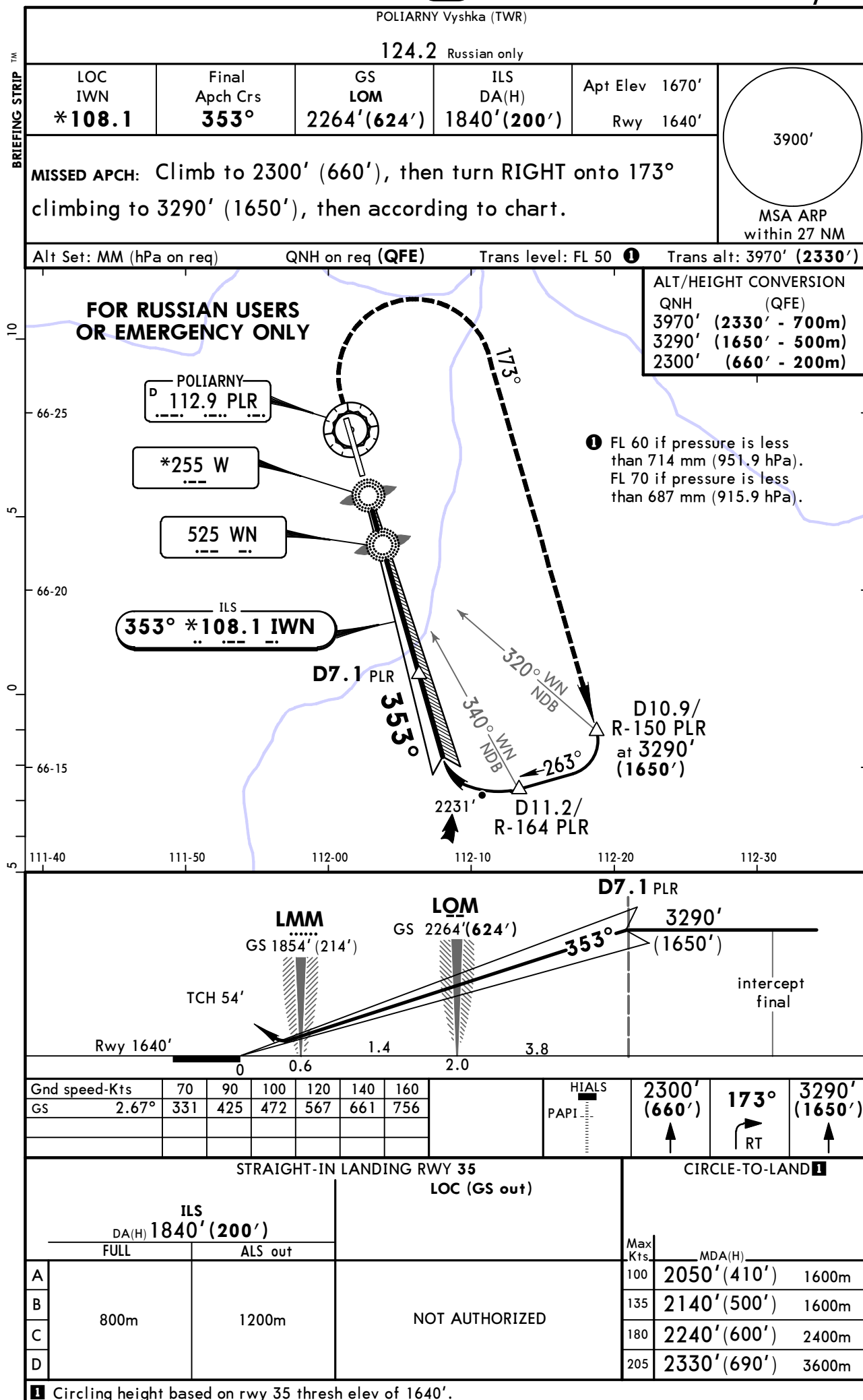
CHANGES: Minimums.

© JEPPesen, 2011, 2016. ALL RIGHTS RESERVED.

UERP/PYJ
POLIARNY

JEPPESSEN
18 MAY 18 **(11-1)** **Eff 24 May**

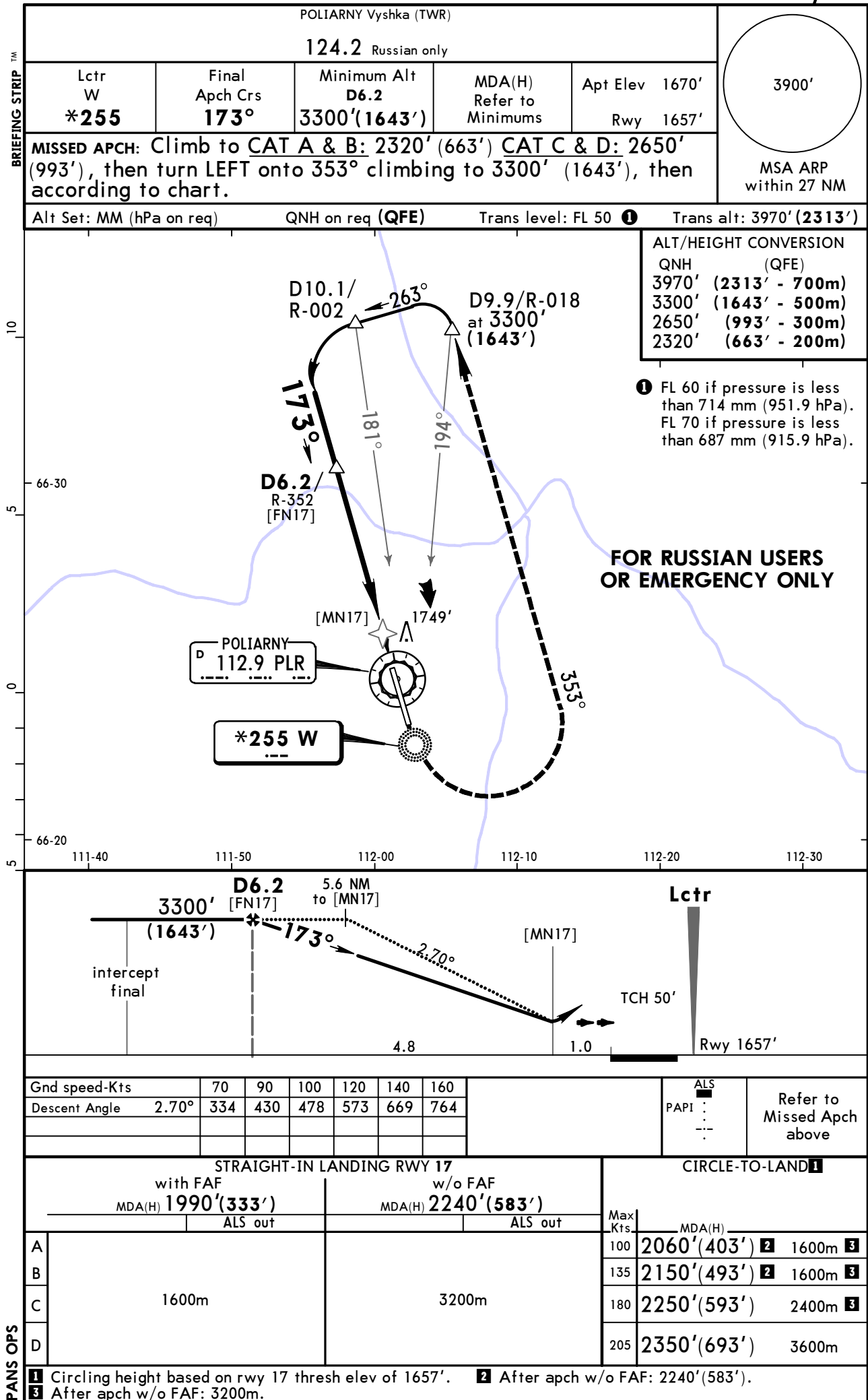
POLIARNY, RUSSIA
ILS Rwy 35



UERP/PYJ
POLIARNY

JEPPESSEN
18 MAY 18 **16-1** Eff 24 May

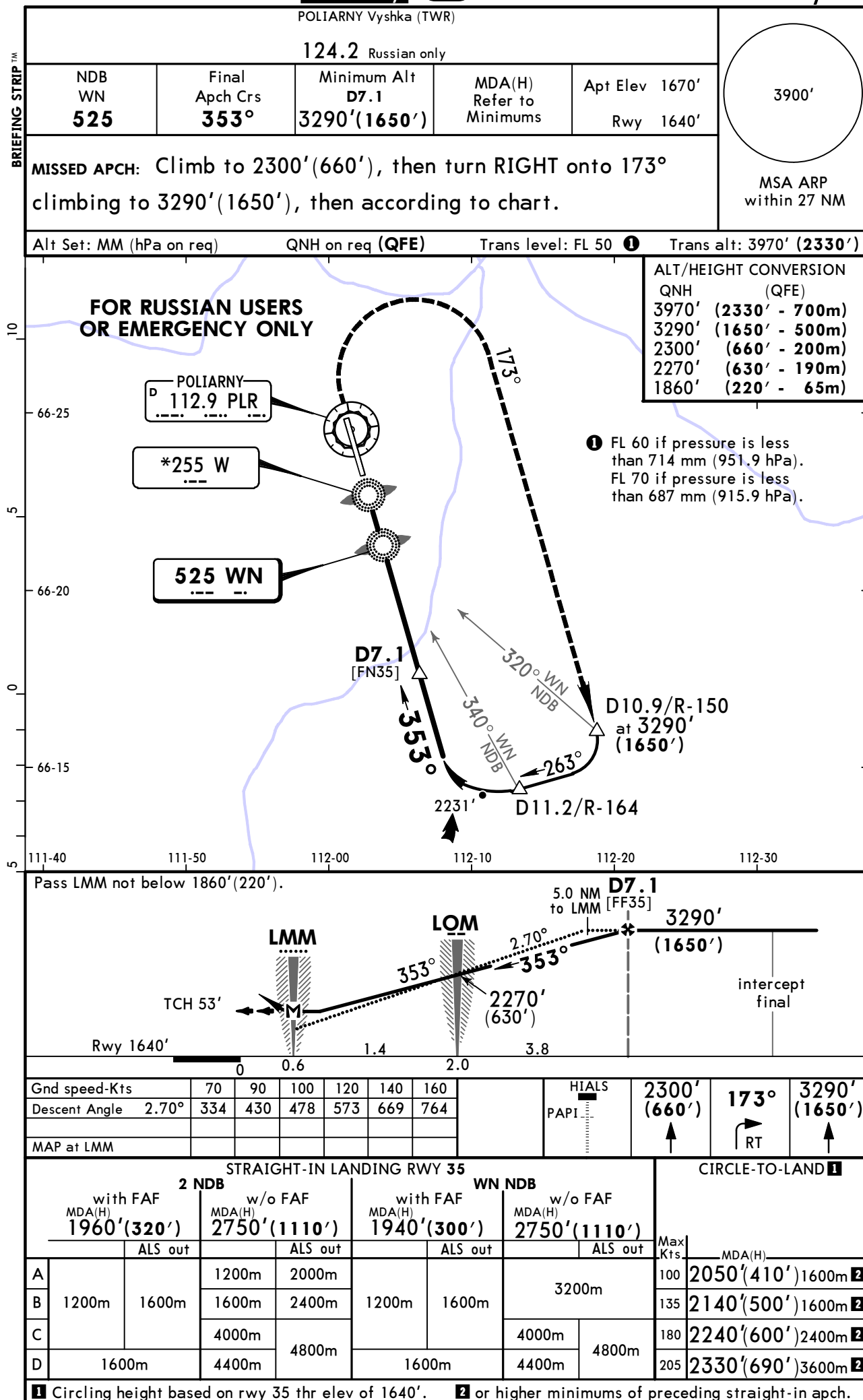
POLIARNY, RUSSIA
NDB Rwy 17



UERP/PYJ
POLIARNY

JEPPESEN
18 MAY 18
Eff 24 May **16-2**

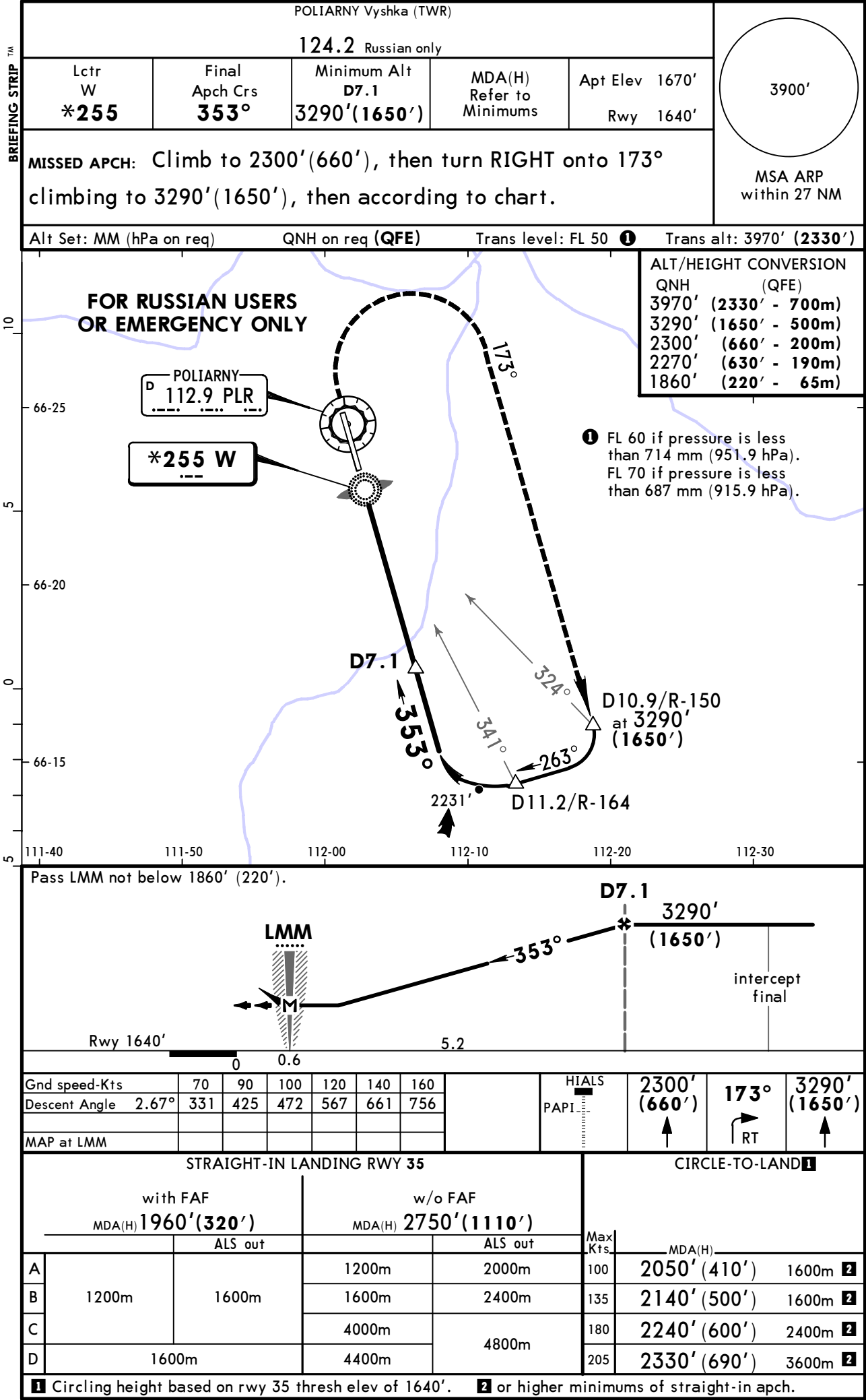
POLIARNY, RUSSIA
2 NDB or WN NDB Rwy 35



UERP/PYJ
POLIARNY

JEPPESSEN
18 MAY 18 **16-3** **Eff 24 May**

POLIARNY, RUSSIA
W NDB Rwy 35



POLIARNY, (POLIARNY - UERP)

TERMINAL CHART CHANGE NOTICES

Chart Change Notices for Airport UERP

Type: Terminal

Effectivity: Temporary

Begin Date: Immediately

End Date: Until Further Notice

(10-2/2A) For russian users or emergency only.